

PHOTOMETRIC TEST REPORT

DECOR PRO ROUND
ADJUSTABLE - TEXTURED WHITE
- 4002835

astro

DECOR PRO ROUND ADJUSTABLE -

astro

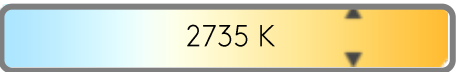
LIGHT EFFICIENCY:



LIGHT QUALITY:



COLOR TEMPERATURE:



OUTPUT: 855 lm
PEAK: 4852 cd
POWER: 11.8 W
PF: 0.95



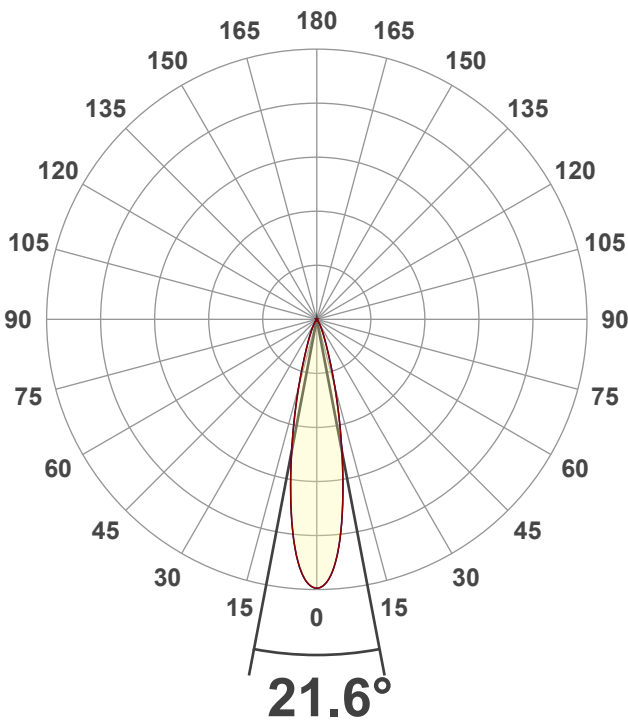
Tracking number: [n/a](#)

Product name:
Decor Pro Round Adjustable - Textured
White - 4002835

Item number:
DRA-TW-HQ27G1-15G1-X-D1

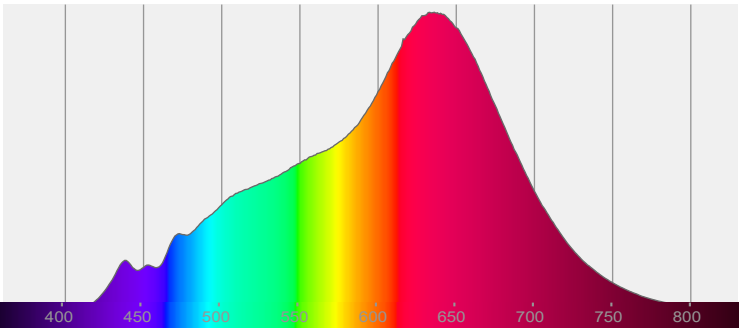
Date and time:
20/12/2024 10:56:22

Description:
IP20 LED Downlight

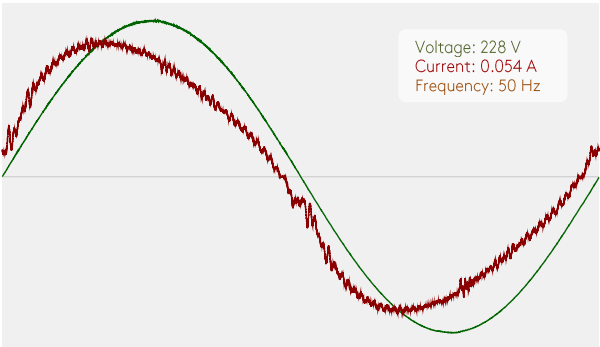


CIE 1931
x: 0.457
y: 0.410

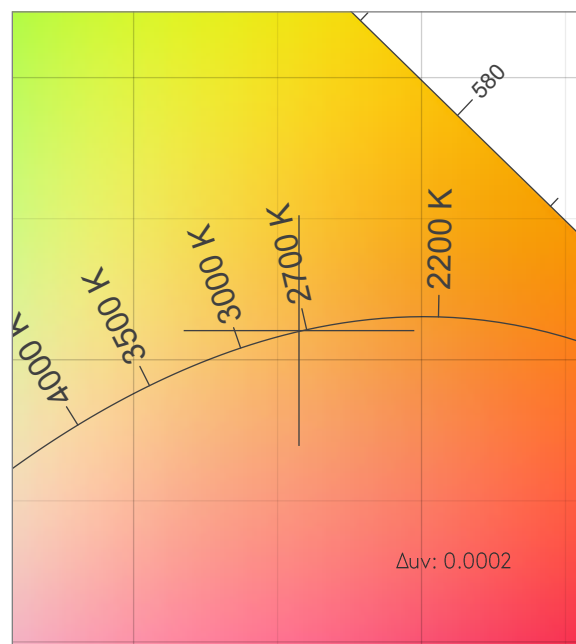
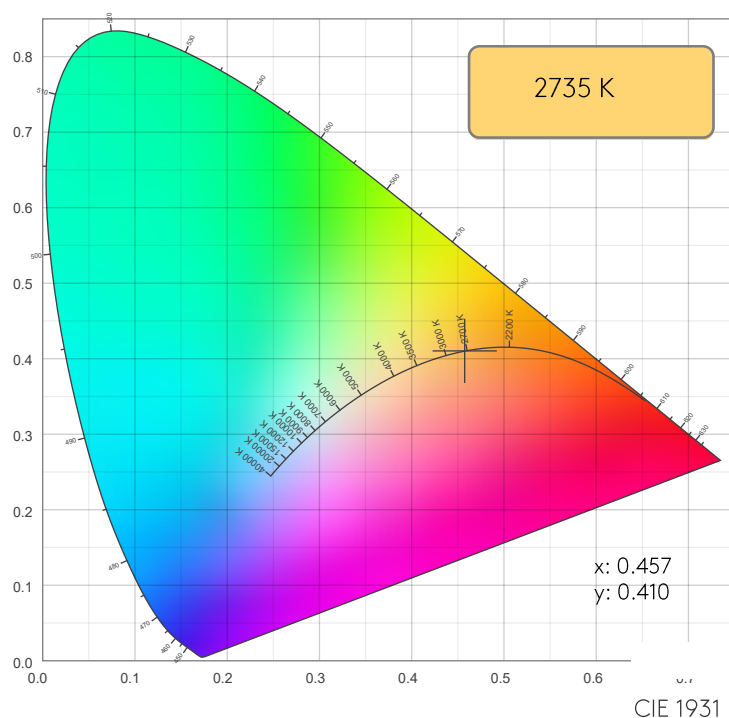
SPECTRA



POWER

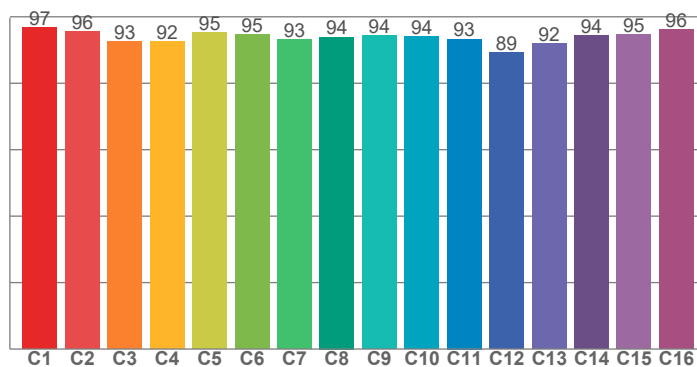


COLOR DETAILS

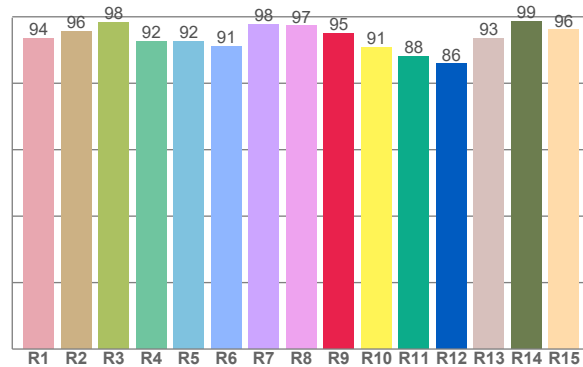


CIE 1931 ZOOM

TM30: 94.1



CRI: 94.8 (R1-R8)



CRI R values, only R1-R8 are used to calculate final CRI value

R1	R2	R3	R4	R5	R6	R7	R8	R9	R10	R11	R12	R13	R14	R15
93.5	95.6	98.3	92.5	92.5	91.0	97.8	97.3	95.0	90.7	88.1	85.8	93.5	98.6	96.1

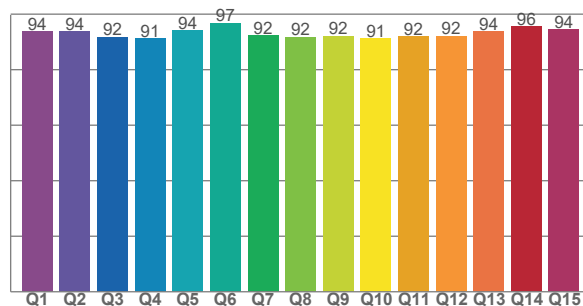
TM30 C values, 16 binned values out of total of 99 C values

C1	C2	C3	C4	C5	C6	C7	C8	C9	C10	C11	C12	C13	C14	C15	C16
96.8	95.7	92.6	92.4	95.2	94.5	93.2	93.9	94.3	94.1	93.3	89.3	91.9	94.4	94.8	96.3

CQS Q values

Q1	Q2	Q3	Q4	Q5	Q6	Q7	Q8	Q9	Q10	Q11	Q12	Q13	Q14	Q15
93.8	93.8	91.8	91.2	94.1	96.8	92.4	91.7	92.1	91.2	92.0	92.1	93.8	95.6	94.5

CQS: 92.9



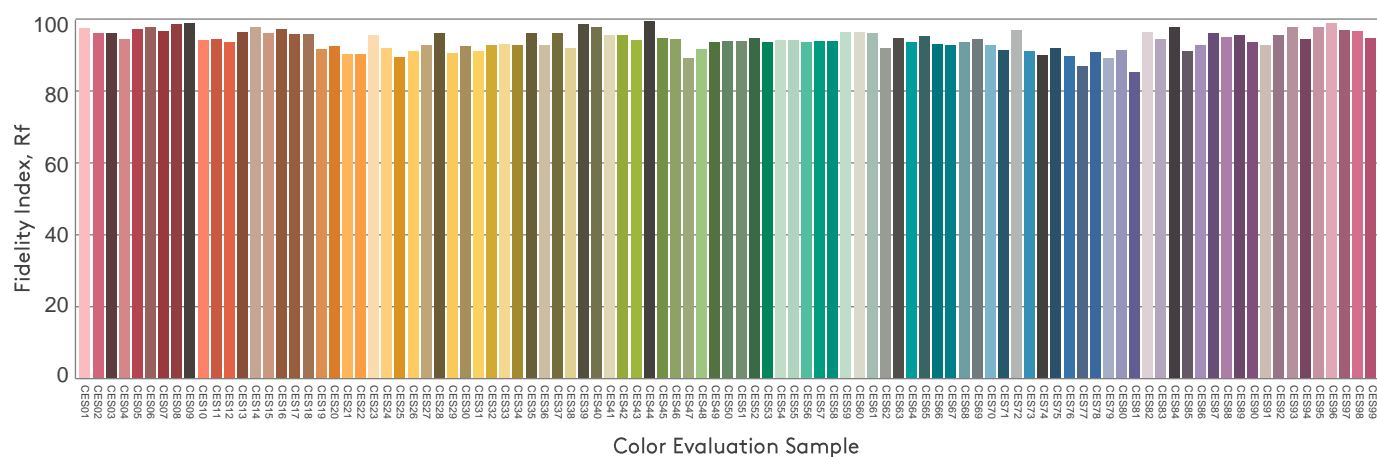
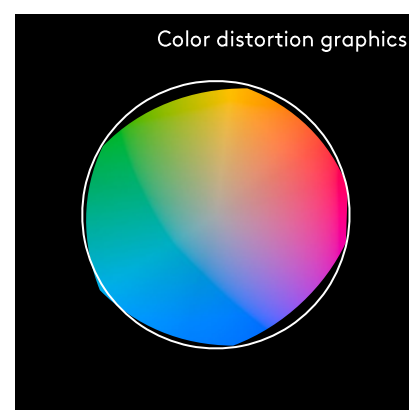
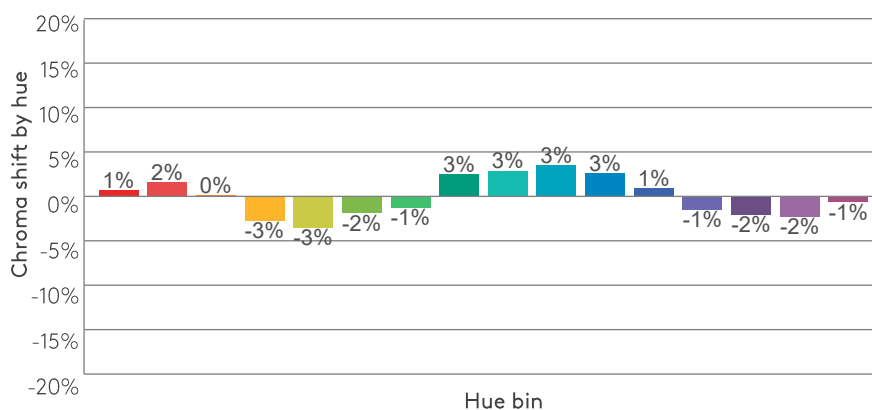
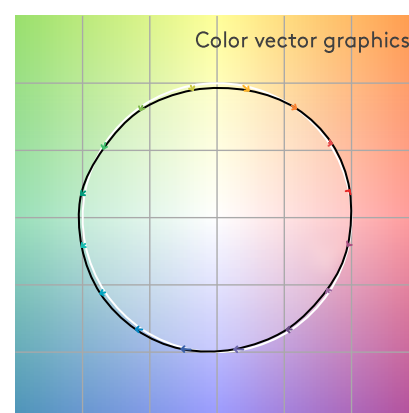
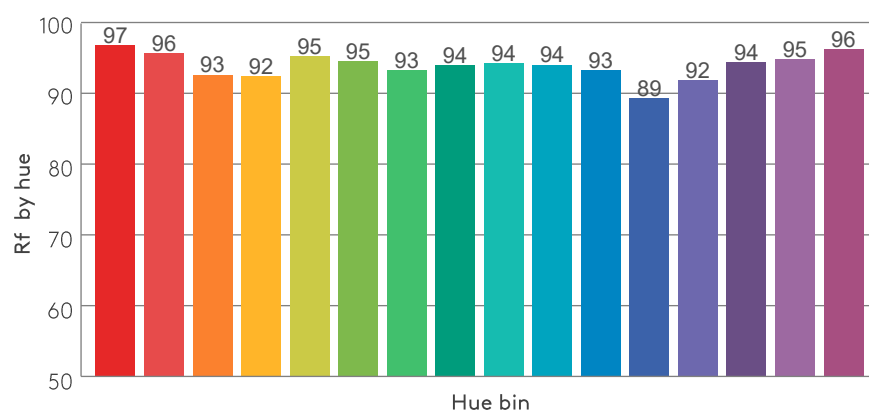
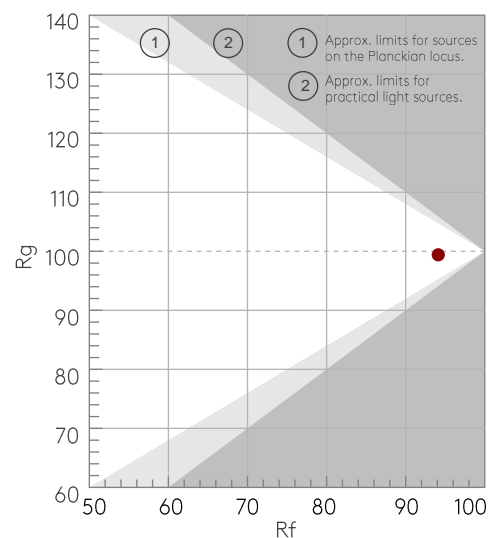
COLOR PARAMETERS

Color temperature	Color rendering index	Red component	Color fidelity	Color gamut	Color quality scale	Color coordinate cie 1931	Color coordinate cie 1931	Color coordinate	Color coordinate	Color deviation from black body
CCT	CRI	CRI R9	TM30 Rf	TM30 Rg	CQS	x	y	u	v	Δuv
2735 K	94.8	95.0	94.1	99.4	92.9	0.457	0.410	0.261	0.351	0.0002

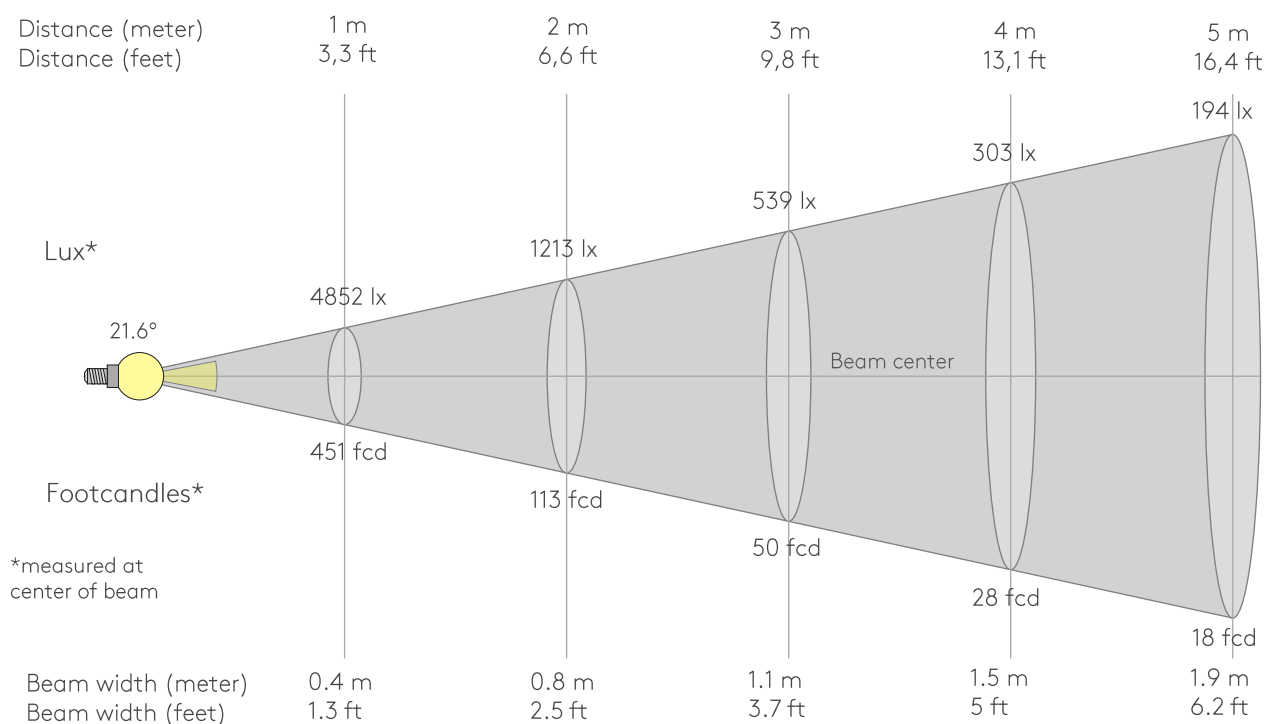
Rf 94.1
Fidelity index Rf

Rg 99.4
Gamut index Rg

Hue Bin	R _f	Graphic shifts (%)	
		Chroma	Hue
1	97	1%	1%
2	96	2%	-2%
3	93	0%	-4%
4	92	-3%	-5%
5	95	-3%	-1%
6	95	-2%	3%
7	93	-1%	4%
8	94	3%	3%
9	94	3%	2%
10	94	3%	-1%
11	93	3%	-4%
12	89	1%	-7%
13	92	-1%	-6%
14	94	-2%	-3%
15	95	-2%	1%
16	96	-1%	-1%



BEAM DETAILS



Beam intensities from 1-20m

1m	2m	3m	4m	5m	6m	7m	8m	9m	10m	11m	12m	13m	14m	15m	16m	17m	18m	19m	20m
3.3ft	6.6ft	9.8ft	13.1ft	16.4ft	19.7ft	23ft	26.2ft	29.5ft	32.8ft	36.1ft	39.4ft	42.7ft	45.9ft	49.2ft	52.5ft	55.8ft	59.1ft	62.3ft	65.6ft
4852lx	1213lx	539lx	303lx	194lx	135lx	99lx	76lx	60lx	49lx	40lx	34lx	29lx	25lx	22lx	19lx	17lx	15lx	13lx	12lx
450.8fcd	112.7fcd	50.1fcd	28.2fcd	18fcd	12.5fcd	9.2fcd	7fcd	5.6fcd	4.5fcd	3.7fcd	3.1fcd	2.7fcd	2.3fcd	2fcd	1.8fcd	1.6fcd	1.4fcd	1.2fcd	1.1fcd

Intensities in 0° c-plane

0°	2°	4°	6°	8°	10°	12°	14°	16°	18°	20°	22°	24°	26°	28°	30°	32°	34°	36°	38°
4852	4761	4476	3991	3359	2682	2050	1496	1047	723	511	369	270	199	146	105	72	49	31	18
100%	98%	92%	82%	69%	55%	42%	31%	22%	15%	11%	8%	6%	4%	3%	2%	1%	1%	1%	0%

Intensities in 90° c-plane

0°	2°	4°	6°	8°	10°	12°	14°	16°	18°	20°	22°	24°	26°	28°	30°	32°	34°	36°	38°
4852	4761	4476	3991	3359	2682	2050	1496	1047	723	511	369	270	199	146	105	72	49	31	18
100%	98%	92%	82%	69%	55%	42%	31%	22%	15%	11%	8%	6%	4%	3%	2%	1%	1%	1%	0%

Intensities in 180° c-plane

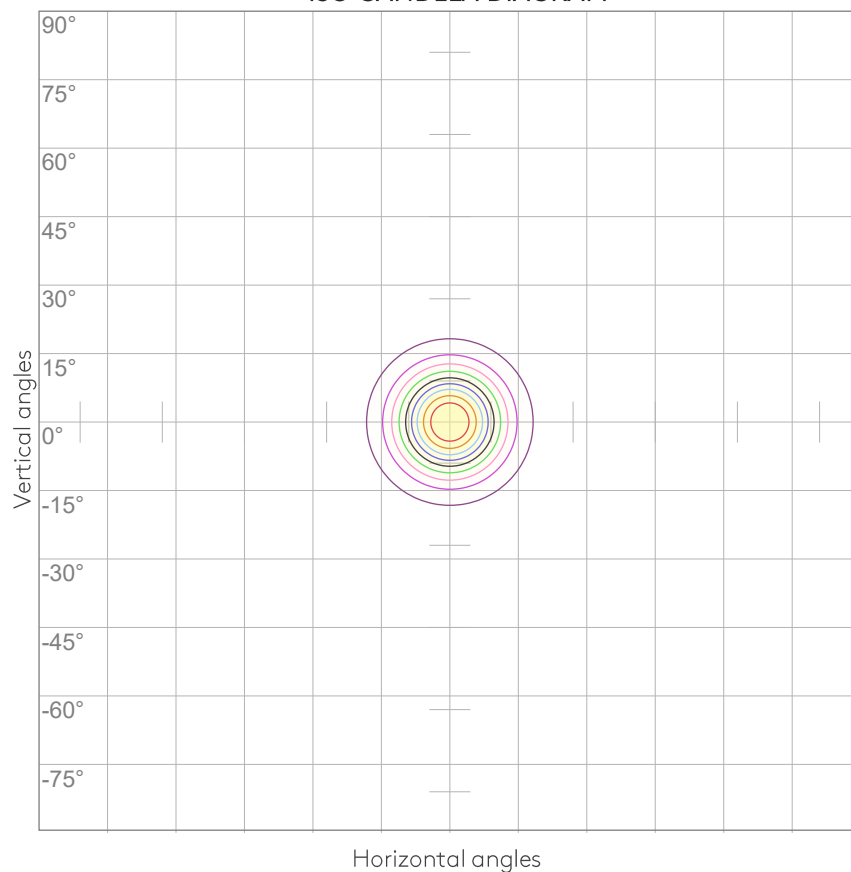
0°	2°	4°	6°	8°	10°	12°	14°	16°	18°	20°	22°	24°	26°	28°	30°	32°	34°	36°	38°
4852	4761	4476	3991	3359	2682	2050	1496	1047	723	511	369	270	199	146	105	72	49	31	18
100%	98%	92%	82%	69%	55%	42%	31%	22%	15%	11%	8%	6%	4%	3%	2%	1%	1%	1%	0%

Intensities in 270° c-plane

0°	2°	4°	6°	8°	10°	12°	14°	16°	18°	20°	22°	24°	26°	28°	30°	32°	34°	36°	38°
4852	4761	4476	3991	3359	2682	2050	1496	1047	723	511	369	270	199	146	105	72	49	31	18
100%	98%	92%	82%	69%	55%	42%	31%	22%	15%	11%	8%	6%	4%	3%	2%	1%	1%	1%	0%

Beam angle 50%	Field angle 10%	Cutoff angle 2,5%	Intensity ratio in 120° cone	Intensity ratio in 90° cone
21.6°	40.6°	58.4°	99.8%	99.5%

ISO CANDELA DIAGRAM



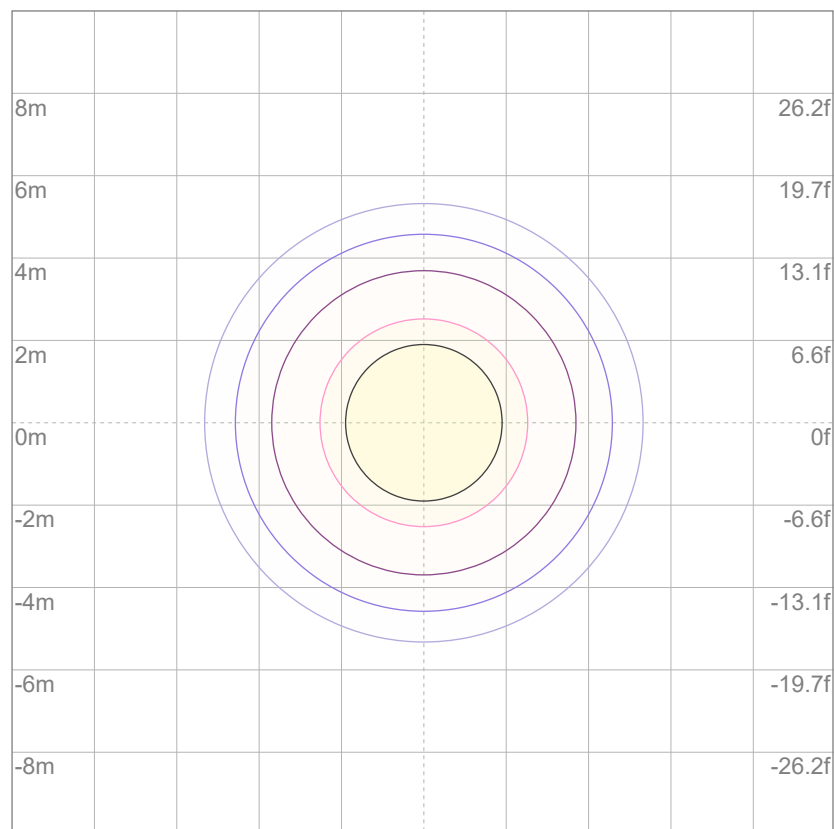
10%	485 cd
20%	970 cd
30%	1456 cd
40%	1941 cd
50%	2426 cd
60%	2911 cd
70%	3397 cd
80%	3882 cd
90%	4367 cd

Conditions:

Number of c-planes: 8

Candela at center: 4852 cd

ISO LUX DIAGRAM



Mounting height: 10 meters (33 feet)

3%	1.46 lx
5%	2.43 lx
10%	4.85 lx
30%	14.6 lx
50%	{LUX_10M50} lx

Conditions:

Number of c-planes: 8

Lux at center: 48.5 lx

Lux distribution on a surface
when lamp is mounted at 10
meters from the surface.

UGR

GLARE EVALUATION ACCORDING TO UGR

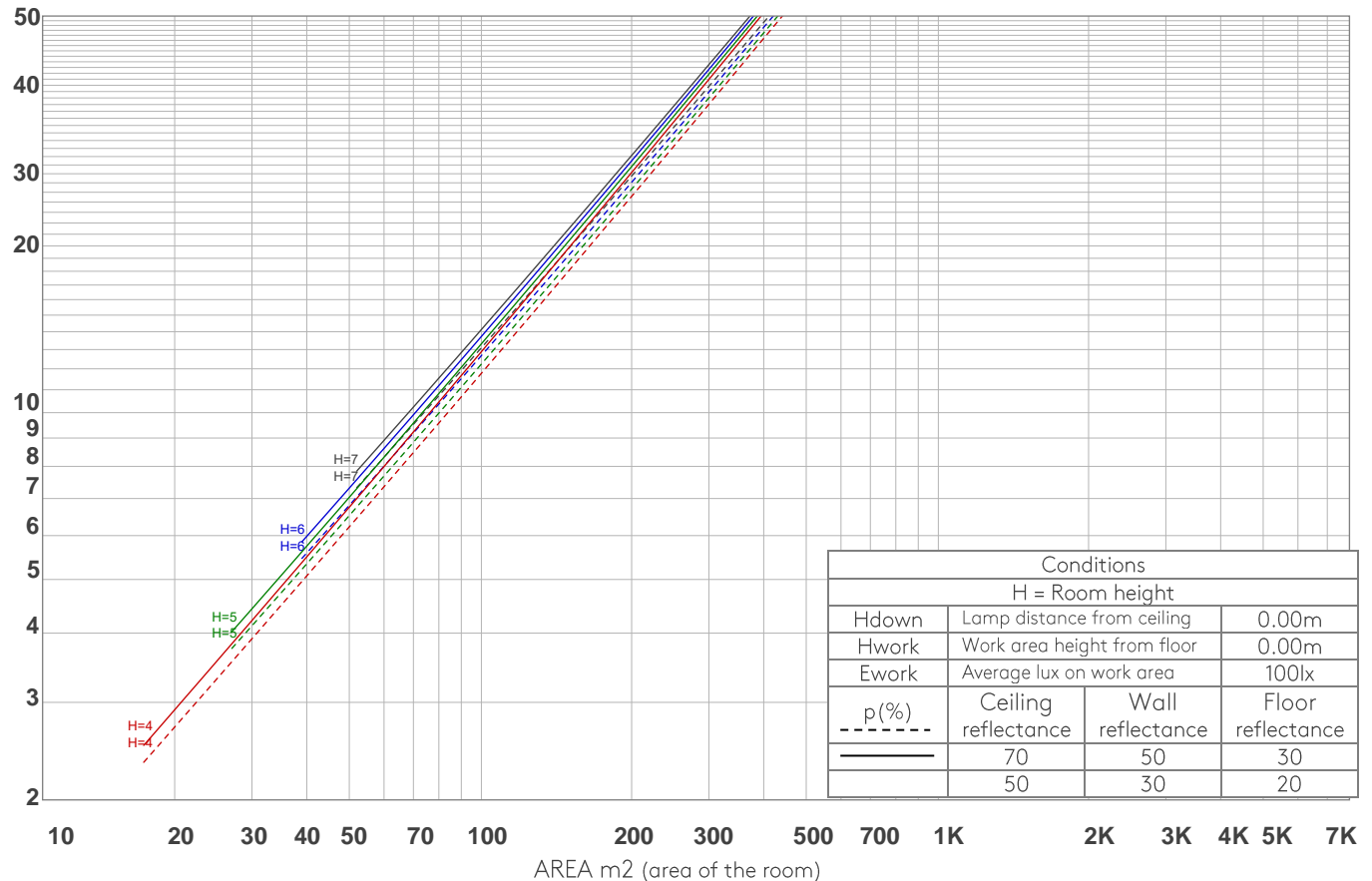
p Ceiling		70	70	50	50	30	70	70	50	50	30
p Walls		50	30	50	30	30	50	30	50	30	30
p Floor		20	20	20	20	20	20	20	20	20	20
Room size X Y		Viewing direction at right angles to lamp axis					Viewing direction parallel to lamp axis				
2H	2H	9.9	10.3	10.0	10.5	10.7	9.9	10.3	10.0	10.5	10.7
	3H	9.6	10.1	10.0	10.3	10.5	9.6	10.1	10.0	10.3	10.5
	4H	9.5	10.1	9.9	10.3	10.5	9.5	10.1	9.9	10.3	10.5
	6H	9.5	9.9	9.8	10.2	10.6	9.5	9.9	9.8	10.2	10.6
	8H	9.5	9.9	9.8	10.2	10.6	9.5	9.9	9.8	10.2	10.6
	12H	9.4	9.8	9.8	10.2	10.6	9.4	9.8	9.8	10.2	10.6
4H	2H	9.5	10.1	9.9	10.3	10.5	9.5	10.1	9.9	10.3	10.5
	3H	9.4	9.8	9.8	10.2	10.6	9.4	9.8	9.8	10.2	10.6
	4H	9.3	9.6	9.7	10.1	10.6	9.3	9.6	9.7	10.1	10.6
	6H	9.2	9.6	9.7	10.0	10.3	9.2	9.6	9.7	10.0	10.3
	8H	9.1	9.5	9.6	9.9	10.2	9.1	9.5	9.6	9.9	10.2
	12H	9.1	9.4	9.6	9.8	10.2	9.1	9.4	9.6	9.8	10.2
8H	4H	9.1	9.5	9.6	9.9	10.2	9.1	9.5	9.6	9.9	10.2
	6H	9.1	9.3	9.6	9.8	10.3	9.1	9.3	9.6	9.8	10.3
	8H	9.1	9.2	9.6	9.8	10.4	9.1	9.2	9.6	9.8	10.4
	12H	9.0	9.2	9.6	9.7	10.3	9.0	9.2	9.6	9.7	10.3
12H	4H	9.1	9.4	9.6	9.8	10.2	9.1	9.4	9.6	9.8	10.2
	6H	9.1	9.2	9.6	9.8	10.4	9.1	9.2	9.6	9.8	10.4
	8H	9.0	9.1	9.6	9.7	10.3	9.0	9.1	9.6	9.7	10.3
Variation of the observer position for the luminaire distance S											
S = 1.0H		6.2 / -11.9					6.2 / -11.9				
S = 1.5H		9.0 / -13.5					9.0 / -13.5				
S = 2.0H		11.0 / -14.1					11.0 / -14.1				
Standard table		n/a					n/a				
Correction summand		n/a					n/a				
Corrected glare indices referring to 855 lm total luminous flux											

COEFFICIENTS OF UTILIZATION

Ceiling reflectance	80				70				50			30			10			0
Wall reflectance	70	50	30	10	70	50	30	10	50	30	10	50	30	10	50	30	10	0
Floor reflectance	20	20	20	20	20	20	20	20	20	20	20	20	20	20	20	20	20	0
RCR	(RCR: Room Cavity Ratio) Room Values are expressed as percentage of Lumens delivered to the task surface																	
0	119	119	119	119	116	116	116	116	111	111	111	106	106	106	102	102	102	100
1	115	113	111	110	113	111	109	108	107	106	105	103	102	101	100	99	99	97
2	112	108	105	103	110	107	104	102	103	101	100	101	99	97	98	97	95	94
3	108	104	100	98	107	103	99	97	100	98	95	98	96	94	96	94	93	91
4	105	100	96	94	104	99	96	93	97	94	92	95	93	91	94	92	90	89
5	102	97	93	90	101	96	92	90	94	91	89	93	90	88	91	89	87	86
6	100	94	90	87	98	93	89	87	92	89	86	91	88	86	89	87	85	84
7	97	91	87	84	96	90	87	84	89	86	84	88	85	83	87	85	83	82
8	95	89	85	82	94	88	84	82	87	84	82	86	83	81	85	83	81	80
9	92	86	82	80	92	86	82	80	85	82	79	84	81	79	84	81	79	78
10	90	84	80	78	90	84	80	78	83	80	78	82	79	77	82	79	77	76

LAMPS (number of lamps)

LUMINAIRE BUDGETARY DIAGRAM



ZONAL LUMEN SUMMARY

0°-10°	10°-20°	20°-30°	30°-40°	40°-50°	50°-60°	60°-70°	70°-80°	80°-90°
354 lm	355 lm	113 lm	27.1 lm	3.71 lm	0.892 lm	0.198 lm	0.084 lm	0.103 lm
90°-100°	100°-110°	110°-120°	120°-130°	130°-140°	140°-150°	150°-160°	160°-170°	170°-180°
0.104 lm	0.093 lm	0.077 lm	0.091 lm	0.134 lm	0.278 lm	0.455 lm	0.358 lm	0.078 lm

FLICKER

FLICKER CURVE (COMPLETE SAMPLED)



FLICKER FRAME (FRAME OF ONE FLICKER



FLICKER FFT (FREQUENCY SCOPE OF FLICKER



FLICKER RESULTS:

Flicker frequency:	n/a Hz
Flicker index:	n/a
Flicker percentage:	n/a %
SVM: (Visual flicker)	n/a

FLICKER CONDITIONS:

Sample rate:	n/a samples/second
--------------	--------------------